

Addendum No. 1
September 23, 2010

Project: Dell Rapids New Elementary School
Dell Rapids, South Dakota

Architect: Architecture Incorporated

Letting: Tuesday, October 5, 2010
2:00 p.m. CT
1216 North Garfield Avenue
Dell Rapids, South Dakota 57022

Scope of this Addendum:

Addenda will be uploaded to the Architecture Incorporated website at www.architectureinc.com in the Projects Out for Bid section as soon as they are available. Bidders are encouraged to check the website for the most current addendum information.

To all bidders and all others to whom drawings and specifications have been issued by Architecture Incorporated.

Acknowledge receipt of this addendum by listing its number and date in the bidders Form of Proposal. Failure to do so may subject bidder to disqualification. This Addendum forms a part of the Contract Documents. It modifies them as follows:

GENERAL ITEMS:

- 1) The following Liquidated Damages and Incentive clauses shall be in effect for this project. Liquidated Damages shall occur at a rate of \$1,000 per calendar day for the Contractor's delay in achieving Substantial Completion of the work by January, 3, 2012. As an incentive for completing the project early, the Contractor shall be awarded \$1,000 per calendar day that the project achieves Substantial Completion prior to January 3, 2012.
- 2) Clarification regarding score boards – score boards are by the owner.
- 3) SPECIFICATION SECTION 077200:
 - a. See Specification Section 077200 – Roof Accessories attached to the end of this addendum. Roof hatch to be 30” by 36”.
- 4) SPECIFICATION SECTION 086200:
 - a. Part 2.1, Article A, Item 2 – dimension clarification – inside dimension of skylight well shall be 4’-6” x 4’-6”. Site built curb shall be approximately 6 7/8” per side – field verify.
- 5) DRAWING SHEET 2.1:
 - a. Topsoil - Plan Sheet 2.1 indicates the location of two on-site topsoil stockpiles. Additionally, part of the topsoil salvaged during the surcharge/site grading operations was utilized in the upper portions of the surcharge material. Earthwork calculations indicate a sufficient quantity of topsoil exists on-site to fulfill topsoil grading

requirements as indicated on the construction documents. In the event additional topsoil is needed, the contractor shall provide the necessary material.

- 6) DRAWING SHEET 2.9:
 - a. See attached Sayre Associates Exhibit 1 for clarification of the sanitary sewer numbering.
- 7) DRAWING SHEET 3.4 - FOOTING AND FOUNDATION PLAN - AREA B & C
 - a. Revise footings in AREA C as indicated in attached Supplemental Drawing SSD-1.
 - b. Revise footings in AREA C as indicated in attached Supplemental Drawing SSD-2.
- 8) DRAWING SHEET 4.2:
 - a. See attached Supplemental Drawing SD-2 for modifications to Detail 5.
- 9) DRAWING SHEET 4.4:
 - a. See attached Supplemental Drawing SD-1 for dimension modifications at the south wall of Room D100.
- 10) DRAWING SHEET 4.5:
 - a. Room Finish Schedule:
 - i. Rooms E128 and E129 – omit reference to ceiling above these rooms. Ceiling at Hall E127 will abut cooler and freezer enclosures.
 - b. Room E108 – omit section cut at east window.
 - c. Room E117 – omit section cut at window.
- 11) DRAWING SHEET 4.7:
 - a. Door Schedule – Door E109-1 is to be a Type 'D' door.
- 12) DRAWING SHEET 4.10:
 - a. See attached Supplemental Drawing SD-3 for modifications to Detail 7.
- 13) DRAWING SHEET 4.17:
 - a. Room A123 – provide motorized room darkening shades at clerestory windows in this room.
 - b. Room A116 – omit bullnose corners outside Room A118 and D102.
- 14) DRAWING SHEET 5.7:
 - a. Detail 5 – topping at top of stair should be 6" thick.
- 15) DRAWING SHEET 6.4:
 - a. Ceiling at Room E135 is exposed structure with paint.

MECHANICAL ITEMS:

- 16) SPECIFICATION SECTION 23 0923 – DIRECT-DIGITAL CONTROL SYSTEM FOR HVAC:
 - a. Article 2.01.B.1:
 - i. Manufacturer shall be Siemens APOGEE
- 17) SPECIFICATION SECTION 23 0713 – DUCT INSULATION:
 - a. Article 3.03.H:
 - i. Delete in its entirety.

18) DRAWING SHEET 8.4:

- a. Boys E106 – Add floor drain between handicap toilet-1D and P-1B. Route waste to main located in chase. Provide 1-1/2” vent from below grade up to nearest main.

19) DRAWING SHEET 8.5:

- a. Plumbing fixture P-3E shall be changed to P-8A at the following locations;
 - i. Fourth A102, Fourth A104, Third A105, Third A107, Third A124, Third A128, Fourth A127 and Fourth A128.
- b. Specific Note 22 – Add the following, “Provide backflow preventer in accessible location.”

20) DRAWING SHEET 8.6:

- a. Plumbing fixture P-3E shall be changed to P-8A at the following locations;
 - i. First B102, First B106, Second B107, Second B108, Second B110, Second B112, First B113, First B117, Kindergarten C102, Kindergarten C106, Resource C107, Resource C108, Early Childhood C116, Kindergarten C120 and Kindergarten C124.
- b. Prep C115 – P-3E shall be labeled P-3D.
- c. Specific Note 7 shall apply to 6” storm piping located in First B102, First B117, Kindergarten C102, Kindergarten C124, Kindergarten C106 and Kindergarten C120.
- d. Specific Note Bubble 12 located at door of Kindergarten C124 shall be deleted.
- e. Specific Note 12 shall read, “6” ST UP...”
- f. Specific Note 13 shall read, “6” ST DN...”
- g. POD Commons C101
 - i. Storm piping main routed parallel to Grid H shall be 6” storm.
 - ii. Storm piping main routed parallel to Grid 26 shall be 4” storm.
 - iii. (2) pipe risers located south of Grid 26 shall be 4” storm UP to roof drain.
- h. Kindergarten C106 – Single circle located at Grid G and south of Grid 24 is a cleanout.
- i. Kindergarten C120 – Storm piping shall be 6” in lieu of 5”

21) DRAWING SHEET 8.7:

- a. Plumbing fixture P-3E shall be changed to P-8A at the following locations;
 - i. OT/PT Sensory D104, Early Childhood D106
- b. Staff D111
 - i. Provide 1/2” CW to ice maker box. Route from nearest main.
 - ii. Sinks located in this room shall be tagged P-8B.
- c. Specific Note 10 – Add the following, “Provide Guy Gray W9700 or approved equal ice maker box.

22) DRAWING SHEET 8.8:

- a. Plumbing fixture P-3E shall be changed to P-8A at the following locations;
 - i. Vocal Music E108.
- b. Girls E104 – Route 6” storm UP to 6” RD near north wall. Route 6” storm to 6” storm main located in southwest corner of Storage E102. Coordinate route with all other trades.

23) DRAWING SHEET 8.9:

- a. Enlarged Plumbing Kitchen Plan
 - i. Hall E127 Clarification – Provide 3” floor drain as indicated on plans
 - ii. Can Wash E131 – Provide 1/2” CW, 1/2” HW, 2” drain to washer box. Route piping back to nearest main. Washer box shall be Guy Gray T200 or approved equal.

- iii. Add Specific Note 41, "Provide manual balancing valve above ceiling in accessible location. Balance to 0.5gpm."
- iv. Specific Note Bubble 41 shall be added to manual balancing damper located near southeast corner of Kitchen E126.
- b. Enlarged Toilet Room Plumbing Plan
 - i. Girls E104 – Floor drain shall be located as indicated on Underfloor Plumbing Plans.
 - ii. Boys E106 – Floor drain shall be located as indicated above.

24) DRAWING SHEET 8.13:

- a. Staff D111 – Thermostat shall be relocated to North wall of Women D112.

25) DRAWING SHEET 8.15:

- a. HVAC Penthouse Plan - Gym
 - i. Ductwork associated with louver L-10 shall be 40/14.

26) DRAWING SHEET 8.22:

- a. Roof drain located at Grid C16 shall be 4".
- b. (2) Roof drains located at Grid C17 and Grid C20 shall be 4"
- c. Roof drain located at Grid C and south of Grid 20 shall be 4".
- d. Roof drain located at Grid F and south of Grid 18 shall be 4"

27) DRAWING SHEET 8.23:

- a. (2) Roof drains located between Grid H & J and south of Grid 26 shall be 4"

28) DRAWING SHEET 8.24:

- a. Roof drain located west of Grid G & 16 shall be 4".
- b. (2) Roof drains located at Grid G & H and between Grid 10 & 16.
- c. Roof drain located east of Grid H and 16 shall be 4".
- d. Roof drain located at Grid J20 shall be 4".

29) DRAWING SHEET 8.25:

- a. (6) Roof drains located between Grid L & P and 10 & 20 shall be 4".
- b. (2) Roof drains located above Music E108 shall be 4".
- c. Roof drain located above Area E Penthouse shall be 4".
- d. Roof drain located above Storage E118 shall be 4".
- e. Roof drain located above Gym Penthouse shall be 4".

ELECTRICAL ITEMS:

30) DRAWING SHEET 9.1:

- a. Pod Commons A123 - add ac receptacle at printer station on south wall. Circuit to L1-16.
- b. Pod Commons A123 – add GFI receptacle at electric water cooler on south wall. Circuit to L1-67.
- c. Pod Commons A123 – change circuit for receptacle on east wall outside Boys A121 to L1-8.
- d. Pod Commons A123-relocate control switch for projector screen to be next to control switches for electric window shades at northwest corner of the room.

31) DRAWING SHEET 9.2:

- a. Elec A119B – See View 2 for all information that is difficult to read.
 - b. View 2 Enlarged Elec A119B plan – Panel on west wall is L2.
- 32) DRAWING SHEET 9.3:
- a. Early Childhood C116 – add specific note 3 by EWC receptacle.
- 33) DRAWING SHEET 9.4:
- a. Secretary D122 - delete ac receptacle on south wall outside the staff workroom.
 - b. Elec D110-see View 2 Enlarged Elec D110 for all information that is difficult to read.
 - c. Early Childhood D106-add specific note 3 by EWC receptacle.
- 34) DRAWING SHEET 9.5:
- a. Elec E118A-See View 2 Enlarged Elec E118A for information that is difficult to read.
- 35) DRAWING SHEET 9.6:
- a. Penthouse Power Plan Area A-relocate exterior receptacle north 17 feet.
 - b. Penthouse Power Plan Area D-relocate exterior receptacle to just east of the roof access door on the south wall and add a WP, GFI receptacle on the exterior of the north penthouse wall between grid lines J&K.
 - c. Penthouse Power Plan Area D -circuit information for disconnects on east wall listed from north to south.
 - i. VFD circuited to H2-43,45,47.
 - ii. VFD circuited to H2-44,46,48.
 - iii. circuited to H2-25,27,29.
 - iv. circuited to H2-26,28,30.
 - v. VFD circuited to H2-49,51,53.
 - vi. VFD circuited to H2-50,52,54.
 - vii. circuited to L4-45.
 - viii. circuited to L4-43
- 36) DRAWING SHEET 9.8:
- a. Roof above Kiln A115A-provide combination starter-disconnect for EF-12 and circuit to L2-73.
 - b. Roof over A200-L2-72,74 is for AC-1 outside unit.
 - c. Add WP, GFI receptacles near EF-1 (cct L1-64), EF-12 (cct L2-73), EF-6 (cct L4-44), EF-3 (cct. L4-47), EF-2 (cct L5-43) and EF-8 (cct L5-44).
- 37) DRAWING SHEET 9.9-9.11:
- a. All Classrooms fixtures with a,b switching should be type R3B in lieu of type R3 except emergency fixtures which are to be R3BE in lieu of type R3E.
- 38) DRAWING SHEET 9.9:
- a. Hall A116-replace specific note 11 with specific note 10.
 - b. Title 56- replace fixtures controlled by switch c and f to Type R3 fixtures.
 - c. Computer A112-fixtures with a,b switching to be Type R2B in lieu of type R2.
- 39) DRAWING SHEET 9.11:
- a. Test D107-relocate switch to west wall just beyond door swing due to window by door.
 - b. Test D108-relocate switch to south wall just beyond door swing due to window by door.
 - c. Conference D118-relocate switch from west wall to north wall just beyond door swing due to window by door.
- 40) DRAWING SHEET 9.13:

- a. Vocal Music E108-replace Type P2 fixture with Type P and Type P2E with Type PE.
- 41) DRAWING SHEET 9.14-9.17:
- a. Clarification-all data devices annotated with WAP are ceiling mounted.
- 42) DRAWING SHEET 9.14:
- a. Third A105 and Third A126 - data devices on north wall to be at 18" in lieu of ac.
 - b. Extend Cable Tray size C serving Grades 3 & 4 south to abut Cable Tray running west from Telecom A119A to Pod Commons A123.
 - c. Replace Cable tray size C running west from Telecom A119A to Pod Commons A123 with size E cable tray.
 - d. Replace size D cable tray running north from A119A to Hall 116 with size B cable tray. Reroute this tray with large radius turns east through Title A56 and then north to Hall A116.
 - e. Delete size C cable tray from Hall A116 outside Toilet A120 to Pod Commons A123.
- 43) DRAWING SHEET 9.16:
- a. Staff D111-data device on south wall to be located ac.
- 44) DRAWING SHEET 9.17:
- a. Vocal Music E108-add junction box and specific note 11 at Promethean Board projector on north wall.
 - b. Gym E116-move fire alarm manual pull station and horn strobe at NW doors to between doors E116-4 and E116-5.
 - c. Elec E118A-delete specific note 5.
- 45) DRAWING SHEET 9.19:
- a. View 3 Telecom A119A North Elevation- Add specific note 12 to TGB.
 - b. View 5 Telecom A119A South Elevation -replace specific note 6 with specific note 4.
 - c. View 9 Telecom D125 West Elevation-relocate specific note 2 and receptacle to view 8. Telecom D125 North Elevation below Panel LT2.
- 46) DRAWING SHEET 9.20:
- a. Add attached Promethean Board Detail.
- 47) DRAWING SHEET 9.21:
- a. Details 6&8: Applicable only if bleacher alternate is taken.
- 48) DRAWING SHEET 9.22:
- a. Detail 5-MDF location to be A119B in lieu of A135.
 - b. Detail 6-For IDF replace 300 with 50 in all three locations.
- 49) DRAWING SHEET 9.25:
- a. Panel L1 and L3-replace 3-pole 50A breaker serving Panel LT1 and LT2 with 3-pole 100A breaker.
 - b. Panel L2-add (1) 1-pole 20A breaker for EF-12 and roof receptacle; load of 780VA.
- 50) DRAWING SHEET 9.26:
- a. Panel LT1 and LT2-panels to be 100A Mains in lieu of 50A Mains. Loads for data racks to be 1200VA per phase.
 - b. Panel KL-panel to be 400A MLO in lieu of 400A MCB.
 - c. Cable Tray Schedule - Add Symbol - E Size - 24" W x 4" D Type - Cable Management Tray (wire mesh) (3 1/2" divider).

51) DRAWING SHEET 9.27:

- a. Lighting Fixture Schedule-Fixture Types T1,T2 and T2E add Dust Cover to Comments.
- b. Lighting Fixture Schedule-add Fixture Type P which will be the same as P2 without the in-board/out-board ballast. add Fixture Type PE which will be the same as P2E without the in-board/out-board ballast.
- c. Lighting Fixture Schedule Note 4-add Alera

GENERAL APPROVALS:

The following material or equipment furnished by the manufacturer's listed, may be substituted as equivalent providing that each item, material, and piece of equipment conforms to the design and requirement of the specifications.

<u>SECTION</u>	<u>ITEM</u>	<u>MANUFACTURER</u>
033000	Vapor Retarder	Viper VaporCheck II
034500	Precast	MarcStone, LLC
075323	EPDM Roofing	Johns Manville
085113	Aluminum Windows	Peerless
096466	Wood Sports-Floor Assemblies	Tarkett Sports ClutchCourt Performance System
114900	Safety Pads Chin-up Bar	AALCO AALCO
129300	Bicycle racks	SiteScapes, Inc.
275116	Paging Intercom & Program Clock System	Bogen
275315	Wireless Clocks	Latham
283100	Fire Detection & Alarm	EST Gamewell

END OF ADDENDUM

SECTION 077200 - ROOF ACCESSORIES

PART 1 - GENERAL

1.1 RELATED DOCUMENTS

- A. Drawings and general provisions of the Contract, including General and Supplementary Conditions and Division 01 Specification Sections, apply to this Section.

1.2 SUMMARY

- A. Section Includes:

- 1. Roof hatches.

- B. Related Sections:

- 1. Division 05 Section "Metal Fabrications" for metal vertical ladders, ships' ladders, and stairs for access to roof hatches.

1.3 PERFORMANCE REQUIREMENTS

- A. General Performance: Roof accessories shall withstand exposure to weather and resist thermally induced movement without failure, rattling, leaking, or fastener disengagement due to defective manufacture, fabrication, installation, or other defects in construction.

1.4 SUBMITTALS

- A. Product Data: For each type of roof accessory indicated. Include construction details, material descriptions, dimensions of individual components and profiles, and finishes.
- B. Shop Drawings: For roof accessories. Include plans, elevations, keyed details, and attachments to other work. Indicate dimensions, loadings, and special conditions. Distinguish between plant- and field-assembled work.
- C. Samples: For each exposed product and for each color and texture specified, prepared on Samples of size to adequately show color.

1.5 COORDINATION

- A. Coordinate layout and installation of roof accessories with [**roofing membrane and base flashing and**]interfacing and adjoining construction to provide a leakproof, weathertight, secure, and noncorrosive installation.
- B. Coordinate dimensions with rough-in information or Shop Drawings of equipment to be supported.

PART 2 - PRODUCTS

2.1 METAL MATERIALS

- A. Zinc-Coated (Galvanized) Steel Sheet: ASTM A 653/A 653M, G90 (Z275) coating designation.
 - 1. Concealed Finish: Pretreat with manufacturer's standard white or light-colored acrylic or polyester-backer finish consisting of prime coat and wash coat, with a minimum total dry film thickness of 0.5 mil (0.013 mm).
- B. Aluminum Extrusions and Tubes: ASTM B 221 (ASTM B 221M), manufacturer's standard alloy and temper for type of use, finished to match assembly where used, otherwise mill finished.
- C. Stainless-Steel Sheet and Shapes: ASTM A 240/A 240M or ASTM A 666, Type 304.
- D. Steel Shapes: ASTM A 36/A 36M, hot-dip galvanized according to ASTM A 123/A 123M unless otherwise indicated.
- E. Steel Tube: ASTM A 500, round tube.
- F. Galvanized-Steel Tube: ASTM A 500, round tube, hot-dip galvanized according to ASTM A 123/A 123M.
- G. Steel Pipe: ASTM A 53/A 53M, galvanized.

2.2 MISCELLANEOUS MATERIALS

- A. General: Provide materials and types of fasteners, protective coatings, sealants, and other miscellaneous items required by manufacturer for a complete installation.
- B. Glass-Fiber Board Insulation: ASTM C 726, thickness as indicated.
- C. Bituminous Coating: Cold-applied asphalt emulsion complying with ASTM D 1187.
- D. Underlayment:
 - 1. Felt: ASTM D 226, Type II (No. 30), asphalt-saturated organic felt, nonperforated.
 - 2. Polyethylene Sheet: 6-mil- (0.15-mm-) thick polyethylene sheet complying with ASTM D 4397.
 - 3. Slip Sheet: Building paper, 3-lb/100 sq. ft. (0.16-kg/sq. m) minimum, rosin sized.
- E. Fasteners: Roof accessory manufacturer's recommended fasteners suitable for application and metals being fastened. Match finish of exposed fasteners with finish of material being fastened. Provide nonremovable fastener heads to exterior exposed fasteners. Furnish the following unless otherwise indicated:
 - 1. Fasteners for Zinc-Coated or Aluminum-Zinc Alloy-Coated Steel: Series 300 stainless steel or hot-dip zinc-coated steel according to ASTM A 153/A 153M or ASTM F 2329.
- F. Gaskets: Manufacturer's standard tubular or fingered design of neoprene, EPDM, PVC, or silicone or a flat design of foam rubber, sponge neoprene, or cork.
- G. Elastomeric Sealant: ASTM C 920, elastomeric [polyurethane] [silicone] polymer sealant as recommended by roof accessory manufacturer for installation indicated; low modulus; of type, grade, class, and use classifications required to seal joints and remain watertight.
- H. Butyl Sealant: ASTM C 1311, single-component, solvent-release butyl rubber sealant; polyisobutylene plasticized; heavy bodied for expansion joints with limited movement.

- I. Asphalt Roofing Cement: ASTM D 4586, asbestos free, of consistency required for application.

2.3 ROOF HATCH

- A. Roof Hatches: Metal roof-hatch units with lids and insulated [**single**]-walled curbs, welded or mechanically fastened and sealed corner joints, continuous lid-to-curb counterflashing and weathertight perimeter gasketing and integrally formed deck-mounting flange at perimeter bottom.
 1. Manufacturers:
 - a. Babcock-Davis.
 - b. Bilco Company (The).
 - c. Dur-Red Products.
 - d. J. L. Industries, Inc.
 - e. Milcor Inc.; Commercial Products Group of Hart & Cooley, Inc.
 - f. O'Keeffe's Inc.
 - B. Type and Size(s): Single-leaf lid, [**As indicated on Drawings**].
 - C. Hatch Material: [**Zinc-coated (galvanized)**] steel sheet, [**0.079 inch (2.01 mm)**] thick.
 - D. Construction:
 1. Insulation: [**Glass-fiber**] board.
 2. Curb Liner: Manufacturer's standard, of same material and finish as metal curb.
 3. Fabricate curbs to minimum height of [**12 inches (300 mm)**] unless otherwise indicated.
 - E. Hardware: [**Stainless**]-steel spring latch with turn handles, butt- or pintle-type hinge system, and padlock hasps inside and outside.

2.4 GENERAL FINISH REQUIREMENTS

- A. Comply with NAAMM's "Metal Finishes Manual for Architectural and Metal Products" for recommendations for applying and designating finishes.
- B. Appearance of Finished Work: Noticeable variations in same piece are not acceptable. Variations in appearance of adjoining components are acceptable if they are within the range of approved Samples and are assembled or installed to minimize contrast.

PART 3 - EXECUTION

3.1 EXAMINATION

- A. Examine substrates, areas, and conditions, with Installer present, to verify actual locations, dimensions, and other conditions affecting performance of the Work.
- B. Verify that substrate is sound, dry, smooth, clean, sloped for drainage, and securely anchored.
- C. Verify dimensions of roof openings for roof accessories.
- D. Proceed with installation only after unsatisfactory conditions have been corrected.

3.2 INSTALLATION

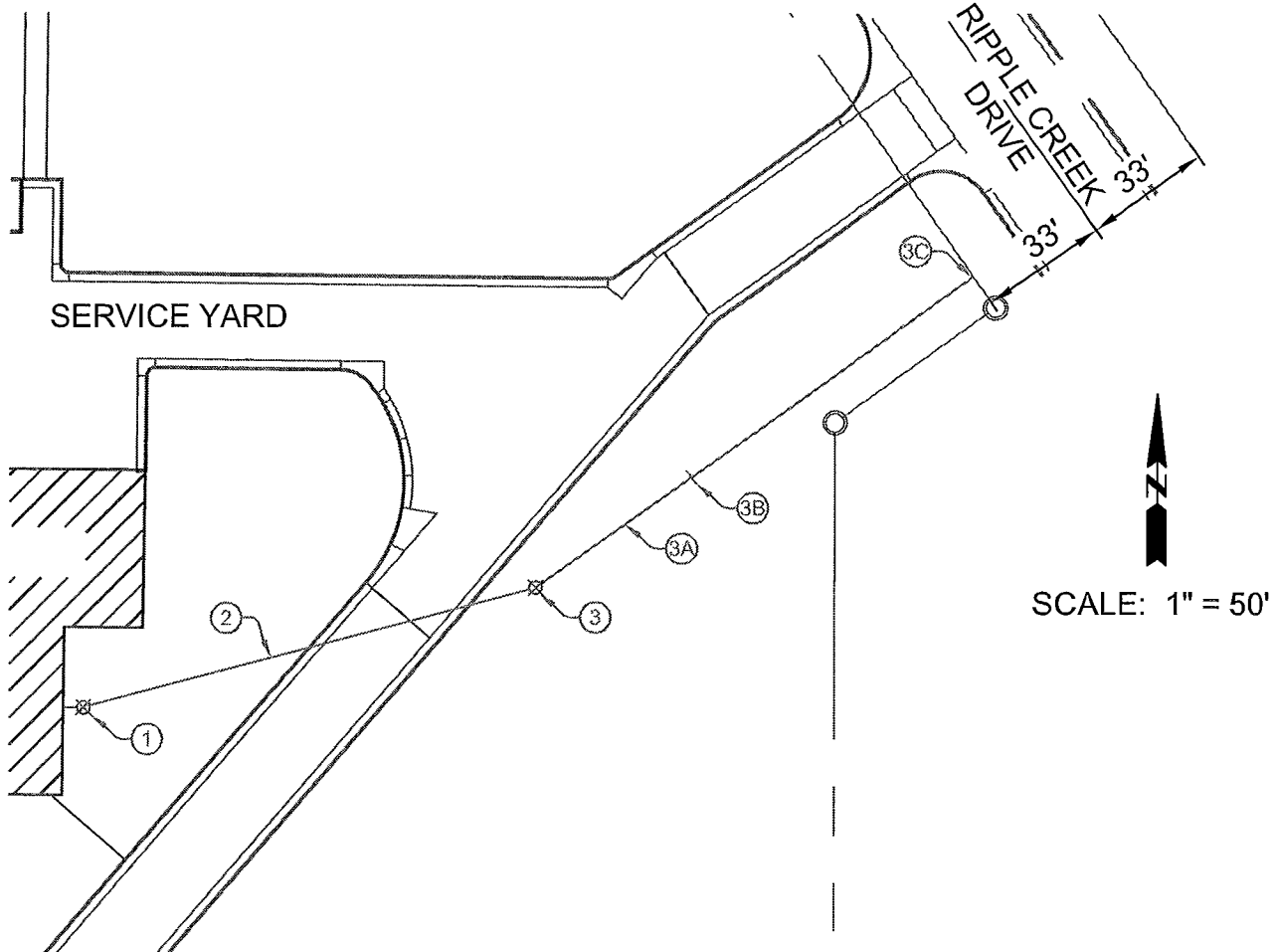
- A. General: Install roof accessories according to manufacturer's written instructions.
1. Install roof accessories level, plumb, true to line and elevation, and without warping, jogs in alignment, excessive oil canning, buckling, or tool marks.
 2. Anchor roof accessories securely in place so they are capable of resisting indicated loads.
 3. Use fasteners, separators, sealants, and other miscellaneous items as required to complete installation of roof accessories and fit them to substrates.
 4. Install roof accessories to resist exposure to weather without failing, rattling, leaking, or loosening of fasteners and seals.
- B. Metal Protection: Protect metals against galvanic action by separating dissimilar metals from contact with each other or with corrosive substrates by painting contact surfaces with bituminous coating or by other permanent separation as recommended by manufacturer.
1. Underlayment: Where installing roof accessories directly on cementitious or wood substrates, install a course of felt underlayment and cover with a slip sheet, or install a course of polyethylene sheet.
 2. Bed flanges in thick coat of asphalt roofing cement where required by manufacturers of roof accessories for waterproof performance.
- C. Roof-Hatch Installation:
1. Install roof hatch so top surface of hatch curb is level.
 2. Verify that roof hatch operates properly. Clean, lubricate, and adjust operating mechanism and hardware.
 3. Attach safety railing system to roof-hatch curb.
 4. Attach ladder-assist post according to manufacturer's written instructions.
- D. Seal joints with [elastomeric] sealant as required by roof accessory manufacturer.

3.3 REPAIR AND CLEANING

- A. Galvanized Surfaces: Clean field welds, bolted connections, and abraded areas and repair galvanizing according to ASTM A 780.
- B. Clean exposed surfaces according to manufacturer's written instructions.
- C. Clean off excess sealants.
- D. Replace roof accessories that have been damaged or that cannot be successfully repaired by finish touchup or similar minor repair procedures.

END OF SECTION 077200

ADDENDUM 1 - CIVIL ITEMS - EXHIBIT 1



ADDENDUM NOTES:

THE NUMBERING OF THE SANITARY SEWER HAS CHANGED AS FOLLOWS:

SANITARY SEWER NOTES:

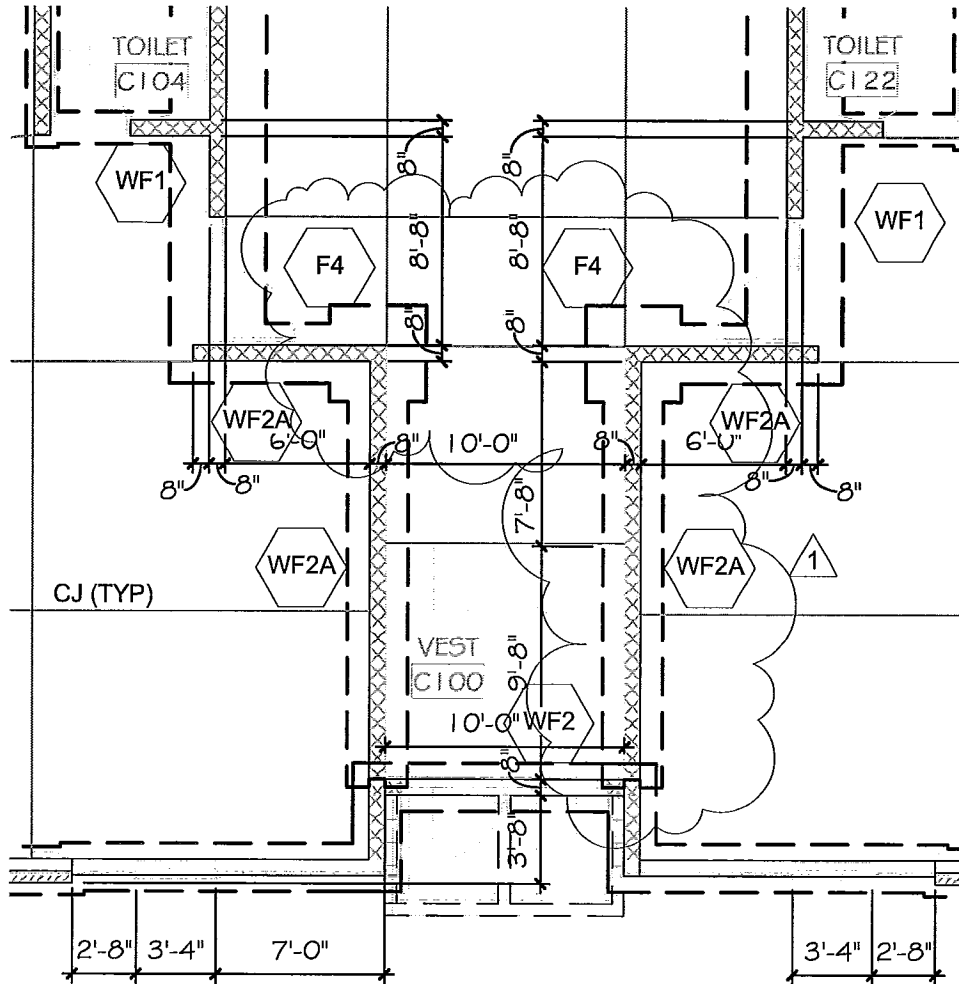
- ① CONNECT TO BUILDING
VERIFY LOCATION AND ELEVATION WITH
MECHANICAL PLANS
INSTALL 6" CLEANOUT WITHIN 5' OF
BUILDING
TOP = 1473.75
INV = 1466.50
- ② INSTALL 6" x 120' P.V.C. PIPE
(S = 1.00% MINIMUM)
- ③ INSTALL 6" P.V.C. CLEANOUT
TOP = 1566.40
- ③A INSTALL 6" x 140' P.V.C. PIPE
(S = 1.00% MINIMUM)
- ③B IN THE EVENT RIPPLE CREEK SANITARY
SEWER IS NOT ACCESSABLE AT SUCH TIME
AS THE SANITARY SEWER SERVICE IS
INSTALLED, THE CONTRACTOR SHALL
INSTALL ONLY SANITARY SEWER SERVICE
TO THIS LOCATION. AT SUCH TIME AS THE
RIPPLE CREEK SANITARY SEWER STUB OUT
IS AVAILABLE, THE CONTRACTOR SHALL
COMPLETE THE SERVICE INSTALLATION.
- ③C CONNECT TO SANITARY SEWER SERVICE
TO BE INSTALLED WITH RIPPLE CREEK
UTILITY PLAN. VERIFY INVERT PRIOR TO
INSTALLING SANITARY SEWER SERVICE.
CONNECT TO BELL END OF PIPE.

DELL RAPIDS NEW ELEMENTARY SCHOOL
JOB NO.: 1127.2105.07/18759
SEPTEMBER 23, 2010

Sayre
Associates

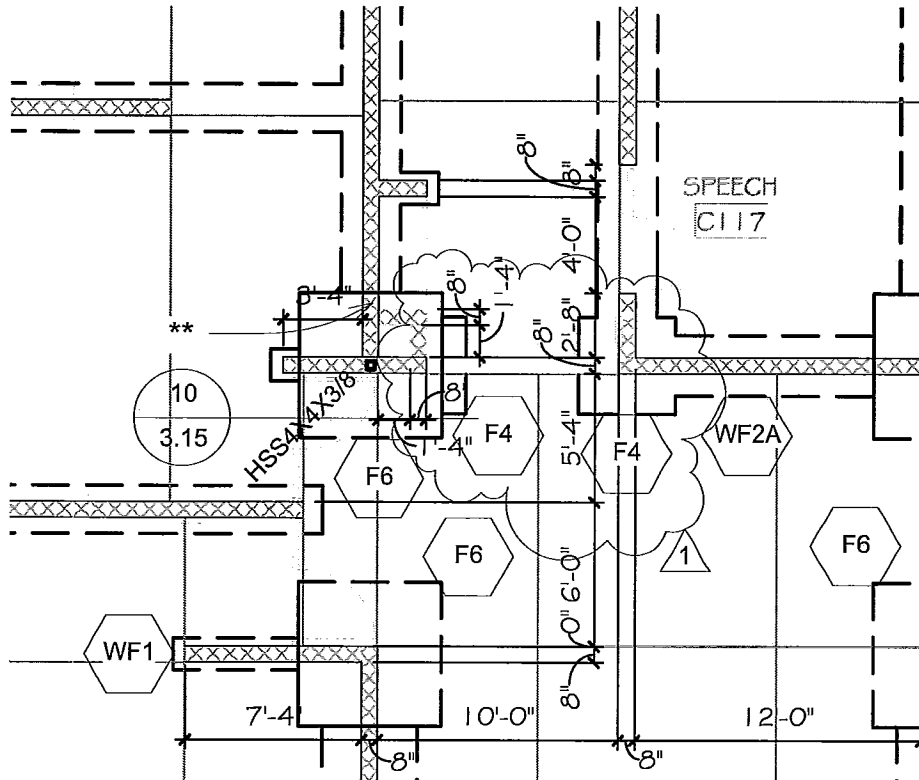
216 S. Duluth Avenue, Sioux Falls, SD 57104
Phone: (605) 332-7211 Fax: (605) 332-7222

Engineers • Surveyors



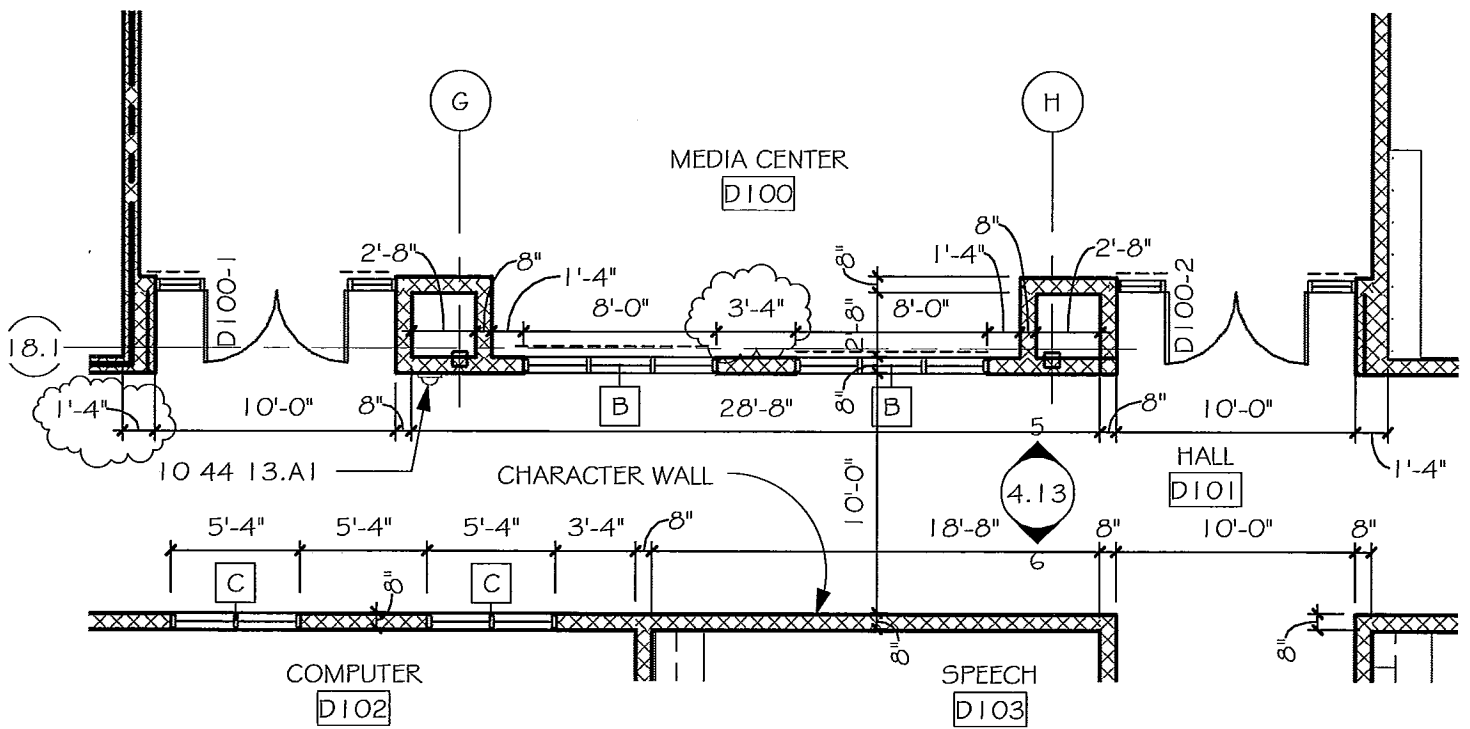
1
PARTIAL FOOTING AND FOUNDATION PLAN - AREA C
 SSD-1 1/8" = 1'-0"

SEAS Inc.	Structural Engineering Associates		Project DELL RAPIDS NEW ELEMENTARY SCHOOL	Addenda #1 SSD-1
	401 E. 8th Street	Phone: 605-334-0188	Job No. 1127.2105.07	
	Suite 201	Fax: 605-334-1669	Date 9.22.10 By RDM	
	Sioux Falls, SD 57103	Web Page: seasd.com		

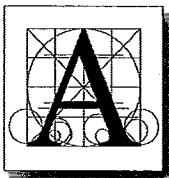


1 PARTIAL FOOTING AND FOUNDATION PLAN - AREA C
 SSD-2 1/8" = 1'-0"

SEEA Inc.	Structural Engineering Associates		Project	DELL RAPIDS NEW ELEMENTARY SCHOOL	Addenda #1 SSD-2
	401 E. 8th Street	Phone: 605-334-0188			
	Suite 201	Fax: 605-334-1669	Job No.	1127.2105.07	
	Sioux Falls, SD 57103	Web Page: seasd.com	Date	By RDM	



SD-1 FLOOR PLAN - AREA D
 SD-1 SCALE: 1/8" = 1'-0"



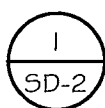
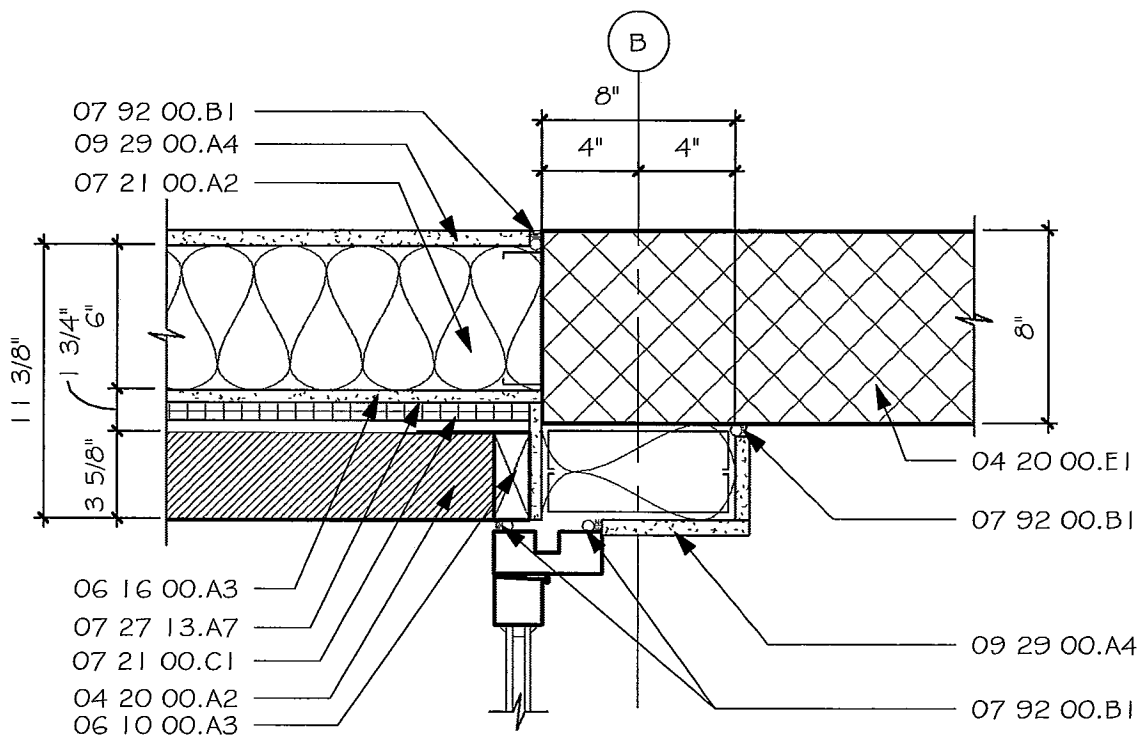
project DELL RAPIDS NEW ELEMENTARY SCHOOL
 number 1127.2105.07 drawn RAG checked MAA
 date SEPT 23, 2010 revision _____

Architecture Incorporated

415 south main avenue, sioux falls, south dakota 57101 (605)339-1711

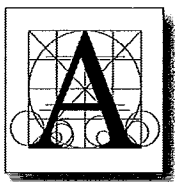
DRAWING

SD-1



DETAIL 5/4.2

SD-2 SCALE: 1 1/2" = 1'-0"



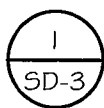
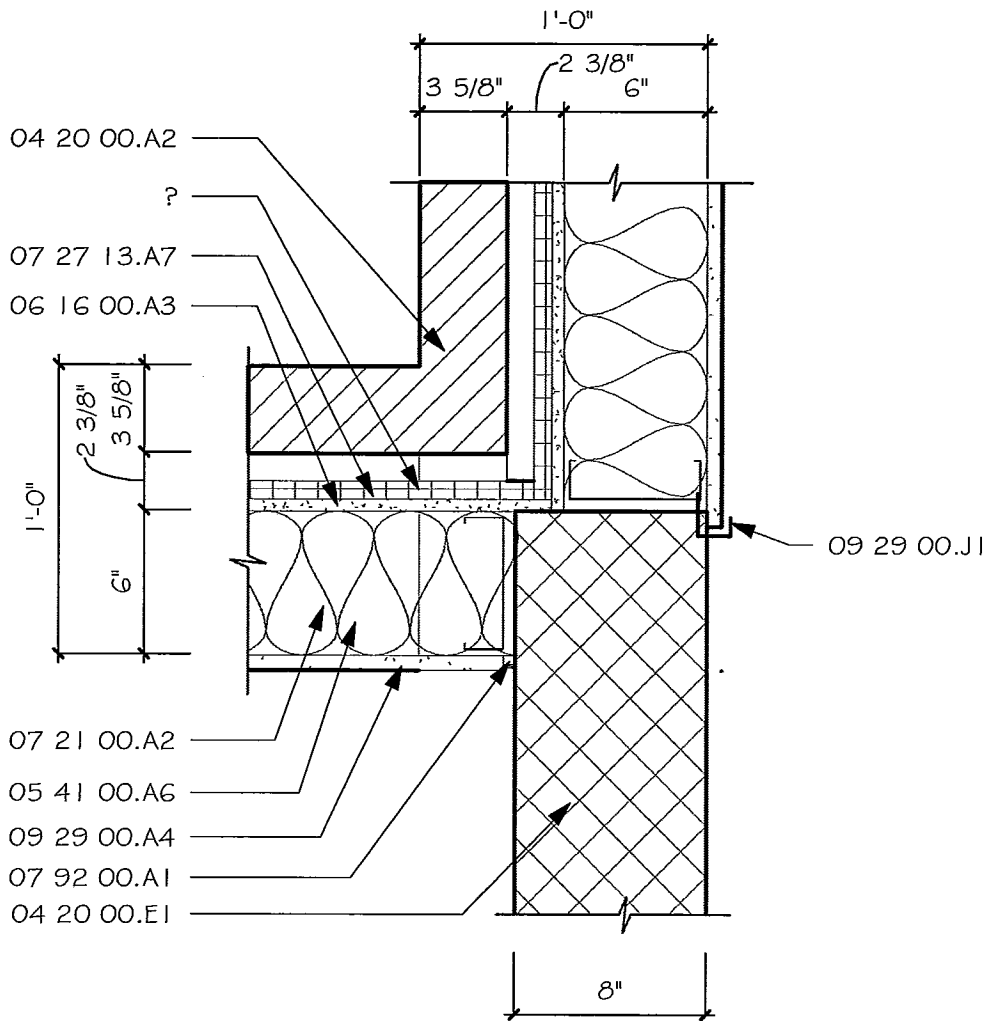
project DELL RAPIDS NEW ELEMENTARY SCHOOL
 number 1127.2105.07 drawn RAG checked MAA
 date SEPT 23, 2010 revision _____

Architecture Incorporated

415 south main avenue, sioux falls, south dakota 57101 (605)339-1711

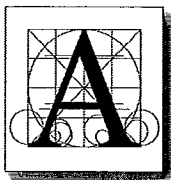
DRAWING

SD-2



DETAIL 7/4.10

SCALE: 1 1/2" = 1'-0"

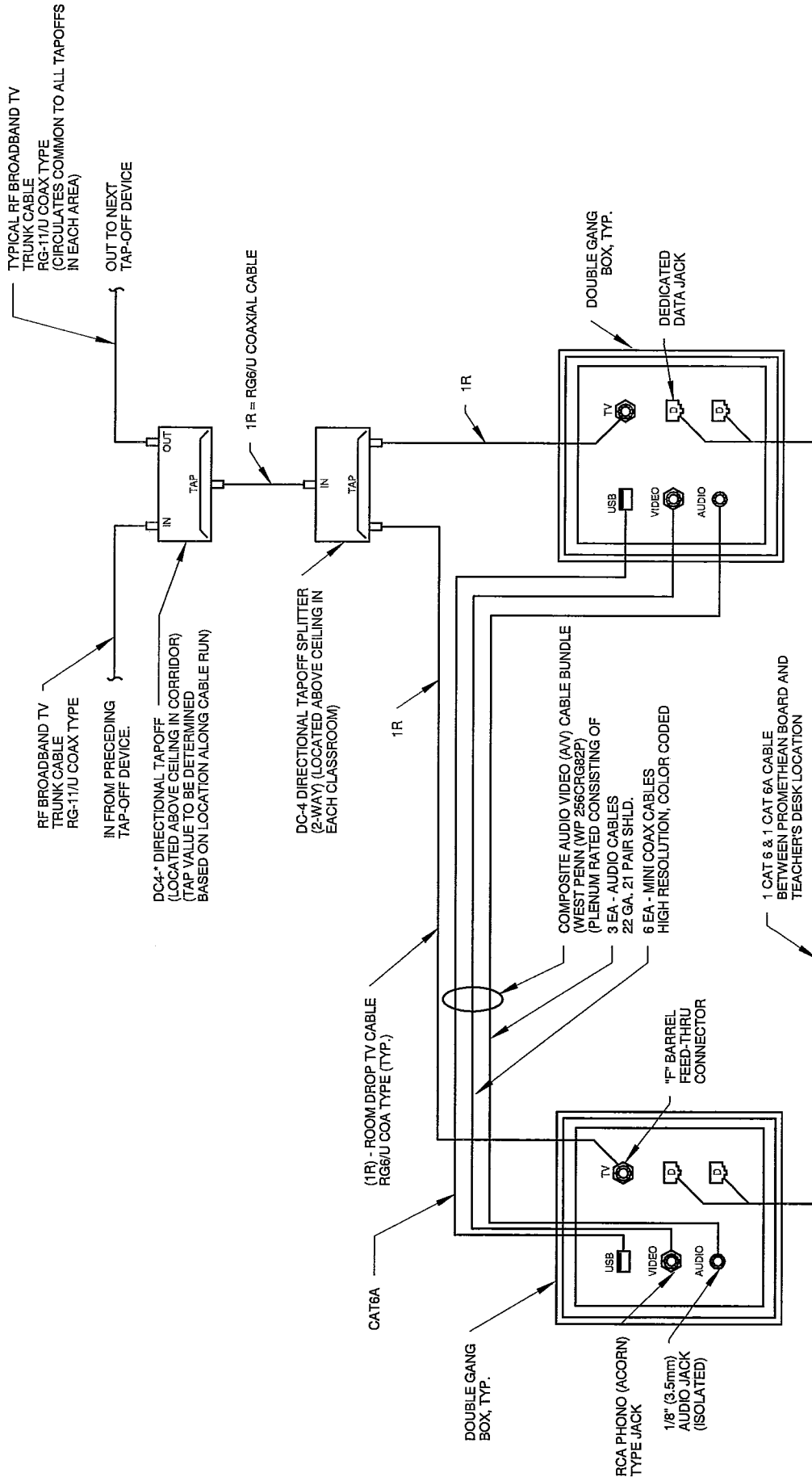


project DELL RAPIDS NEW ELEMENTARY SCHOOL
 number 1127.2105.07 drawn RAG checked MAA
 date SEPT 23, 2010 revision _____

Architecture Incorporated
 415 south main avenue, sioux falls, south dakota 57101 (605)339-1711

DRAWING

SD-3



LOCATE AT TEACHER'S DESK

LOCATE AT PROMETHEAN BOARD

PROMETHEAN BOARD DETAIL

SCALE: NONE



4609 SOUTH TECHLINK CIRCLE ■ STIOUX FALLS, SD 57106
 PHONE: (605) 362-3753 ■ FAX: (605) 362-3759
 www.westplainsengineering.com
 RAPID CITY, SD ■ STIOUX FALLS, SD ■ CASPER, WY ■ CEDAR RAPIDS, IA

Promethean Board Detail

DELL RAPIDS ELEMENTARY SCHOOL

DESIGNED:	DKW	DRAWN:	DKW
APPROVED:	TAW		
PROJECT#:	1127.2105.07		
DATE:	09/20/10		

SHEET:	9.20.1
--------	--------

Plan Holders List - Dell Rapids Elementary School,
 Dell Rapids, South Dakota
 Project Number 2105
 BID DATE: October 5, 2010
 2:00 p.m. Central Daylight Time

CATEGORY	NAME	ADDRESS1	ADDRESS2	CITY	STATE	ZIP	PHONE	FAX	E-MAIL
<u>A/E Consultant</u>	Architecture Incorporated	415 South Main Avenue	PO Box 2140	Sioux Falls	SD	57101	605-339-1711	605-339-2331	mail@architecture inc.com
	Geotek Engineering & Testing Services	909 East 50th Street North		Sioux Falls	SD	57104	605-335-5512	605-225-0773	
	Institutions Services Inc	1421 N B Avenue		Sioux Falls	SD	57104	800-440-9697	605-339-3937	tomv@isdakota.com
	Sayre Associates Inc.	216 S Duluth Ave		Sioux Falls	SD	57104	(605)332-7211	605-332-7222	jeff@sayreassociates.com
	SEA Inc	401 East 8th Street	Suite 201	Sioux Falls	SD	57103	605-334-0188	605-334-1669	mark@seasd.com
	State Fire Marshall of South Dakota	118 W Capitol Avenue		Pierre	SD	57501	605-773-3562	605-773-6631	
	West Plains Engineering	4609 South Techlink Circle		Sioux Falls	SD	57106	605-362-3753	605-362-3759	mark.grebnert@westplainsengineering.com
<u>Electrical</u>	American Electric Construction, Inc	2212 East 39th Street N		Sioux Falls	SD	57104	605-336-8310	605-335-4713	jeremy@american elec.com
	Baumgartner's Electric Inc	1601 W 1st Street		Sioux Falls	SD	57104	605-336-2889	605-338-6809	tomg@baumgartners electric.com
	Better Electric	710 North Helen		Sioux Falls	SD	57104	605-333-9900	605-333-9905	Ken@better-electric.com

CATEGORY	NAME	ADDRESS1	ADDRESS2	CITY	STATE	ZIP	PHONE	FAX	E-MAIL
	Echo Electric Supply	1495 Darling Drive	PO Box 428	Worthington	MN	56187	507-372-7767	507-372-7769	lyle.tenhakken@echogroupinc.com
	Electric Construction	1512 E 17th St	PO Box 1835	Sioux Falls	SD	57101	605-336-2800	605-336-3210	gkunuz@electricconstructionfsd.com
	Fulda Electric Service Inc	PO Box 348	1009 9th Ave N	Brandon	SD	57005	605-582-7669	605-582-7670	jtrovato@fuldaelectric.com
	Midwestern Electric	1403 North Cleveland		Sioux Falls	SD	57103	605-338-2560	605-335-7379	terry@midwesternelectricsd.com
	Muth Electric	1717 N Sanborn Boulevard	PO Box 1400	Mitchell	SD	57301	605-996-3983	605-996-2203	JYee@muthelectric.com
	Siemonsma Electric, LLC	25755 456th Avenue		Humboldt	SD	57035	605-351-6073	605-363-3666	siemonsmaelectric@yahoo.com
	Thompson Electric	Box 88338 - 57109	520 South Valley View Road	Sioux Falls	SD	57105	605-331-4588	605-331-4862	manderson@tec-corp.com
Exchange	Bismarck-Mandan Builders' Exchange	805 Adobe Trail SE	PO Box 550	Mandan	ND	58554	701-667-4322	701-667-5217	bis_mairbe@midconetwork.com
	Construction Ind Center	2771 Plant Street	PO Box 1227	Rapid City	SD	57702	605-343-5252	605-343-4591	cic@constructionindustrycenter.com
	Fargo/Moorhead Builders Exchange	1010 Page Drive	PO Box 10076	Fargo	ND	58106-0	701-237-6772	701-232-1653	info@fnbx.org
	Lincoln Builders Bureau	5910 South 58th Street, Suite C	Jessie Paul	Lincoln	NE	68516	402-421-8332	402-421-8334	jessiep@cornhusker.net
	Master Builders of Siouxland	903 6th Street	PO Box 1168	Sioux City	IA	51102	712-255-9533	712-255-9571	jkudson@dybc.com
	McGraw-Hill/Dodge - Minneapolis	1401 Glenwood Ave North		Minneapolis	MN	55405	612-381-2290	612-381-2295	joanna.dahn@mcgraw-hill.com
	Minneapolis Bldrs Exch	1123 Glenwood Avenue		Minneapolis	MN	55405	612-381-2620	612-381-2621	jim@mbex.org
	Omaha Builders Exchange	4255 South 94th Street		Omaha	NE	68127	402-593-6908	402-593-6912	omahaplanner@ombe@mbionline.com

CATEGORY	NAME	ADDRESS1	ADDRESS2	CITY	STATE	ZIP	PHONE	FAX	E-MAIL
	Plains Builders Exchange	220 North Kiwanis	PO Box 1396	Sioux Falls	SD	57104	605-334-8886	605-334-0112	info@plainsbuilders.com
	Reed Construction Data	Document Processing Ctr	30 Technology Parkway Ste 500	Norcross	GA	30092-2	800-699-8640	800-508-5370	steven.stiers@reedbusiness.com
	Sioux City Constr League	3900 Stadium Drive	PO Box 3346	Sioux City	IA	51102	712-255-9730	712-255-3915	scplanneroom@siouxland.net
	Sioux Falls Builders Exchange	1418 C Avenue		Sioux Falls	SD	57104	605-357-8687	605-357-8655	roger@stfx.com
	St Paul Builders Exchange	445 Farrington Street		St. Paul	MN	55103	651-224-7545	651-224-7549	info@bxsp.org
<u>General Contractor</u>									
	Breitbach Construction	802 1st Avenue	PO Box 78	Elrosa	MN	56325	320-697-5525	320-697-5559	ryan@breitbachconstruction.com
	Clark Drew Construction	302 32nd Avenue South		Brookings	SD	57006	605-692-9063	605-692-1418	randy@clarkdrewconstruction.com
	GA Johnson Construction	PO Box 90726		Sioux Falls	SD	57109	605-361-8800	605-361-8802	corey@gajci.com
	Gil Haugan Construction	200 East 60th St	PO Box 84430	Sioux Falls	SD	57104	605-336-6082	605-336-0051	todd@gilhaugan.com
	Golden Rule Construction Co	3905 S Western Ave	Suite 1	Sioux Falls	SD	57105	605-336-7780	605-336-0114	regan@goldenruleconst.com
	Henry Carlson Company	PO Box 84010	1205 West Russell Street	Sioux Falls	SD	57118-4	605-336-2410	605-332-1314	hcco@henrycarlson.com
	Hoogendoorn Construction	47895 U S Hwy 18		Canton	SD	57013	605-987-4319	605-987-4485	peteh@hoogendoornconstruction.com
	Jans Corporation	300 N Phillips Ave	Suite 201	Sioux Falls	SD	57104	605-331-5267	605-331-5821	jarnieh@janscorp.com
	Merrimac Construction	15681 Buchanan St NE		East Bethel	MN	55011	763-434-6857	763-434-6568	Jeannie.z@merrimac-const.com
	Peska Construction Inc	2700 N 4th Ave		Sioux Falls	SD	57104	605-334-0173	605-334-0102	mail@peskaconstruction.com

CATEGORY	NAME	ADDRESS1	ADDRESS2	CITY	STATE	ZIP	PHONE	FAX	E-MAIL
	Sioux Falls Construction	800 South 7th Avenue	PO 2728	Sioux Falls	SD	57101	605-336-1640	605-334-9342	dhagee@sfcnstcon in
	Swift Contractors	27106 Albers Avenue		Sioux Falls	SD	57108	605-368-2185	605-368-2194	tkelley@swiftcon nc.com
<u>Mechanical</u>	Baete-Forseth Heating & Air	4700 North Northview Avenue		Sioux Falls	SD	57107	605-336-0545	605-336-0629	chad@baeteforset h.com
	Breyfogle Plumbing & Heating	2103 North 4th Avenue		Sioux Falls	SD	57104	605-271-0995	605-275-4498	jbreyfogle@sio.mi dco.net
	Hander Inc Plumbing & Heating	2407 W 5th Street		Sioux Falls	SD	57104	605-339-9633	605-339-9018	karenc@hander.co m
	Haugan Heating	420 Noth Harlem Avenue		Sioux Falls	SD	57104	605-334-7911	605-334-4127	hauganhgac@orb icom.biz
	Howe Heating & Plumbing	712 E 3rd Street		Sioux Falls	SD	57103	605-339-2020	605-339-0824	Annette@howeinc .com
	Krier & Blain Heating & Air Conditioning	1207 W Delaware	Box 356	Sioux Falls	SD	57101	605-331-4100	605-332-0025	mikeri@krierblain. com
	Krohmer Plumbing	401 South Ohlman		Mitchell	SD	57301	605-996-2752	605-996-0929	nickk@krohmerpl umbing.com
	Midwestern Mechanical	4105 N Lewis Avenue		Sioux Falls	SD	57104-5	605-339-3963	605-338-1195	brigham@mwmech h.com
	PrairieSons INC	1117 East Ash Street		Brandon	SD	57005	605-582-8611	605-582-8618	frank@prairiesons .com
	Redinger Bros Plumbing & Heating	21 South Broadway	PO Box 316	Watertown	SD	57201	605-886-6955	605-886-5307	zach@redingerbr os.com
	Rick Plumbing & Heating	600 North Helen		Sioux Falls	SD	57104	605-275-6139	605-274-0603	scottrick@midcon etwork.com
	Tessier's Inc	700 West Cherokee	PO Box 112	Sioux Falls	SD	57104	605-336-3175	605-334-9620	lzakrzewski@tessi ersinc.com

Other

CATEGORY	NAME	ADDRESS1	ADDRESS2	CITY	STATE	ZIP	PHONE	FAX	E-MAIL
	AMAX Contractors	3509 Antelope Avenue		Kerney	NE	68847	308-236-5667	308-237-9569	amax.gail@rom-ne.com
	American Engineering and Testing	601 East 48th Street		Sioux Falls,	SD	57104	605-332-5371	605-332-8488	
	Buskerud Construction & Dells Materials	24663 475th	PO Box 187	Dell Rapids	SD	57022	605-428-5483	605-428-5484	aliceamkrantz@buskerudconst.com
	Fox Drywall	27164 470th Avenue	Suite 1	Tea	SD	57064	605-368-5557	605-368-5572	fox@foxdrywall.com
	J & D Masonry	42260 258th Street		Alexandria	SD	57311	605-360-2727	605-239-4707	jwillie@trioval.net
	Jensen Masonry Inc	2305 W Barrington Circle		Sioux Falls	SD	57108	605-330-0033	605-330-1942	kevinjen@sio.midco.net
	M & L Masonry	3801 South Kiwanis Ave	Suite 2	Sioux Falls	SD	57105	605-988-0714	605-988-0714	hrickmas@ictel.com
	Olympic Companies, Inc	3518 N Casco		Sioux Falls	SD	57104	605-332-4420	605-332-4432	dsands@olympiccompanies.com
	Opie Niemeyer Flooring LLC	718 11th Street		Brookings	SD	57006	605-690-4246	605-692-1959	bojnp@brookings.net
	P & M Steel Co.	4401 North Westport Avenue		Sioux Falls	SD	57107	605-339-0141	605-339-0169	rock@pmsteel.net
	Pleasant Hills Steel	1117 South Langdon Street		Mitchell	SD	57301	605-996-5000	605-996-5000	mark@pleasanthills.com
	S & S Masonry	518 East Highway 46		Wagner	SD	57380	605-384-4545	605-384-4224	n/a
	Seating and Athletic Facility Enterprises	79554 325th Street		Ellendale	MN	56026	507-256-7604	507-256-7207	stadiumstev@myclearwave.net
	Seedorf Masonry	14711 Custoe Road		Omaha	NE	68138	402-895-4604	402-895-4071	smith.donna@seedorf.com
	Siouxland Masonry, Inc.	701 E. Division		Alton	IA	51003	712-756-5525	712-756-4637	sland@midlands.net

CATEGORY	NAME	ADDRESS1	ADDRESS2	CITY	STATE	ZIP	PHONE	FAX	E-MAIL
	Triple J Insulators, Inc	1419 Locust Street		Dakota City	NE	68731	402-987-1121	402-987-1131	n/a
	Walter Ree Masonry Constr Inc	1501 Gary Drive		Sioux Falls	SD	57103	605-338-1669	605-332-3061	davidolson@allian cecom.net
	Williams Masonry, Inc	40451 Stone House Rd		Avon	SD	57315	605-286-3734	605-286-3790	faye@gwtrc.net
<u>Owner</u>	Dell Rapids School District	1216 N Garfield		Dell Rapids	SD	57022	605-428-4040	605-428-5609	